

07/10/21

ASPIRE MAXI LIFESTYLE COMMUNITY BED – WITH ELECTRIC FOLDING!

This all new ELECTRICALLY FOLDING bariatric bed solution is now available in stock.

This product solves several problems:

- Simple and economical solution for up to 350kg bariatric patient care, most of the market is offering non-foldable hospital ward style beds into this category.
- Safe moving and handling of heavy equipment for resellers and healthcare staff.
- Rapid installation/removal of bariatric care solutions which is needed by hospitals and Aged Care providers who provide respite services.
- Compact folded size provides efficient storage as a hire/ward asset.

KEY FEATURES

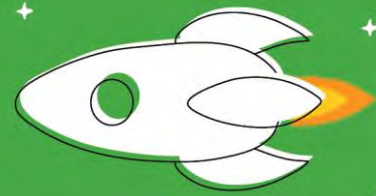
- **Quick up time:** Single button press electrical folding mechanism requires no lifting and improves workplace health & safety outcomes for delivery staff and maintenance teams.
- **True bariatric size:** Super-King size mattress platform caters to true bariatric clients reducing falls risk and moving and handling complexity.
- **Auto-regression:** in the backrest reduces skin shear forces and removes a significant cause of patient slippage. This reduces the need for care staff to reposition oversized patients.
- **Finishes:** Stylish wooden end shrouds are included as standard and offer a simple solution for cleaning and infection control.
- **Mattresses:** Compatible with our new Maxi Lifestyle Foam Mattress (BEM046710) and Active Air Bari 10 Super King (PTM639520) to provide static and dynamic sleep surface options.



New Product Launch



New Product Launch



BED, ACCESSORY AND MATTRESS CODES

Product Code	Description
Beds	
BEB046020	Bed - Aspire MAXI LIFESTYLE Community Bed - Electric Folding - Gunmetal Grey - 385kg
Rails	
BEA016586	Bed Side Rails - 3/4 Folding - Aspire LIFESTYLE Community Beds
Accessories	
BEA016592	Bed IV Pole - Aspire LIFESTYLE & Community Care Beds
BEA016598	Bed Self Help Pole - Aspire MAXI LIFESTYLE Community Care Bed
Mattresses	
BEM046710	Mattress - Aspire Lifecomfort - Maxi Lifestyle - Super King - 2060x1150x200mm - 350kg
PTM639520	Mattress Replacement - Aspire ACTIVE AIR BARI 10 - Super King - 20 Cells - 2000x1230x270mm - 450kg

